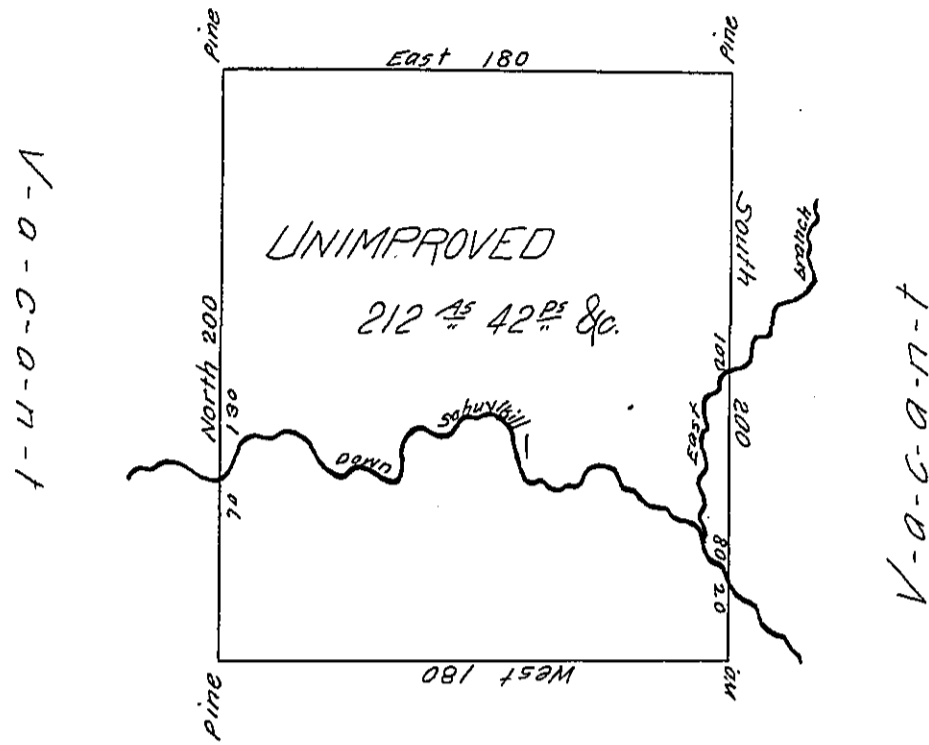


Martins land



Claimed by Samuel Lintner

Situate in Rush township Schuylkill county containing two hundred and twelve acres and forty two perches and the allowance of six per Cent surveyed on the 20th day of July 1825 in pursuance of a warrant dated the 11th day of April 1825 granted John Conrad Offerman.

To Gabriel Hiester, Esquire
Surveyor General of Penn^a

F. Lauderbrum
Deputy Surveyor of
Schuylkill County

IN TESTIMONY that the above is a copy of the original remaining on file in the Department of Internal Affairs of Pennsylvania, made conformably to an Act of Assembly approved the 16th day of February, 1833, I have hereunto set my Hand and caused the Seal of said Department to be affixed at Harrisburg, this eighteenth day of April, 1906

Isaac D. Brown
Secretary of Internal Affairs.